

engage 

Make Domino & Office 365 Your Dream Team

Sharon James
& Olaf Boerner



engage

Agenda

- The Rise of groupware
- Some of the challenges & solutions
 - System integration
 - Mail co-existence
 - Right size licensing
 - & more



Notes and Domino



Who are we ?

Olaf Boerner

- CEO and founder of BCC
- Collaboration Enthusiast
- Regular Speaker
- Previous IBM Champion
- Fun non-work fact
Plays Tennis

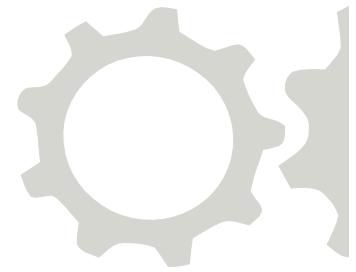


Sharon James

- Senior Consultant
- WebSphere SME for 20 yrs
- Regular Speaker
- IBM Champion since 2011
- Fun non-work fact
Charity costumer & fund-raiser



engage 



Office 1984

 BCC



engage

The Rise of Groupware

The image displays three overlapping screenshots illustrating the evolution of groupware:

- Top Screenshot (Lotus Notes):** Shows the classic Lotus Notes interface with a menu bar (File, Edit, View, Mail, Compose, Text, Tools, Design, Window, Help) and a workspace area containing various icons and a list of entries.
- Middle Screenshot (IBM Notes):** Shows the IBM Notes interface, featuring a menu bar (File, Edit, View, Create, Actions, Window, Help) and a workspace area with a list of entries and a calendar view.
- Bottom Screenshot (Modern Web Calendar):** Shows a modern web-based calendar interface with a menu bar (File, Edit, View, Create, Actions, Tools, Window, Help) and a workspace area displaying a calendar grid for October 6-10, 2013, with various events and tasks listed.

Collaboration is also about Documents

IBM

Search



IBM Social Software Home Contributors Archive

OpenOffice 4.0 is
Available Now – Go
and Download It!



July 23, 2013 | Written by: [Luis Benitez](#)

Follow the conversation

This is why MS Office and
Office 365 went in!



Office 365

Launched
2011

Notes Mail or Outlook Mail ?



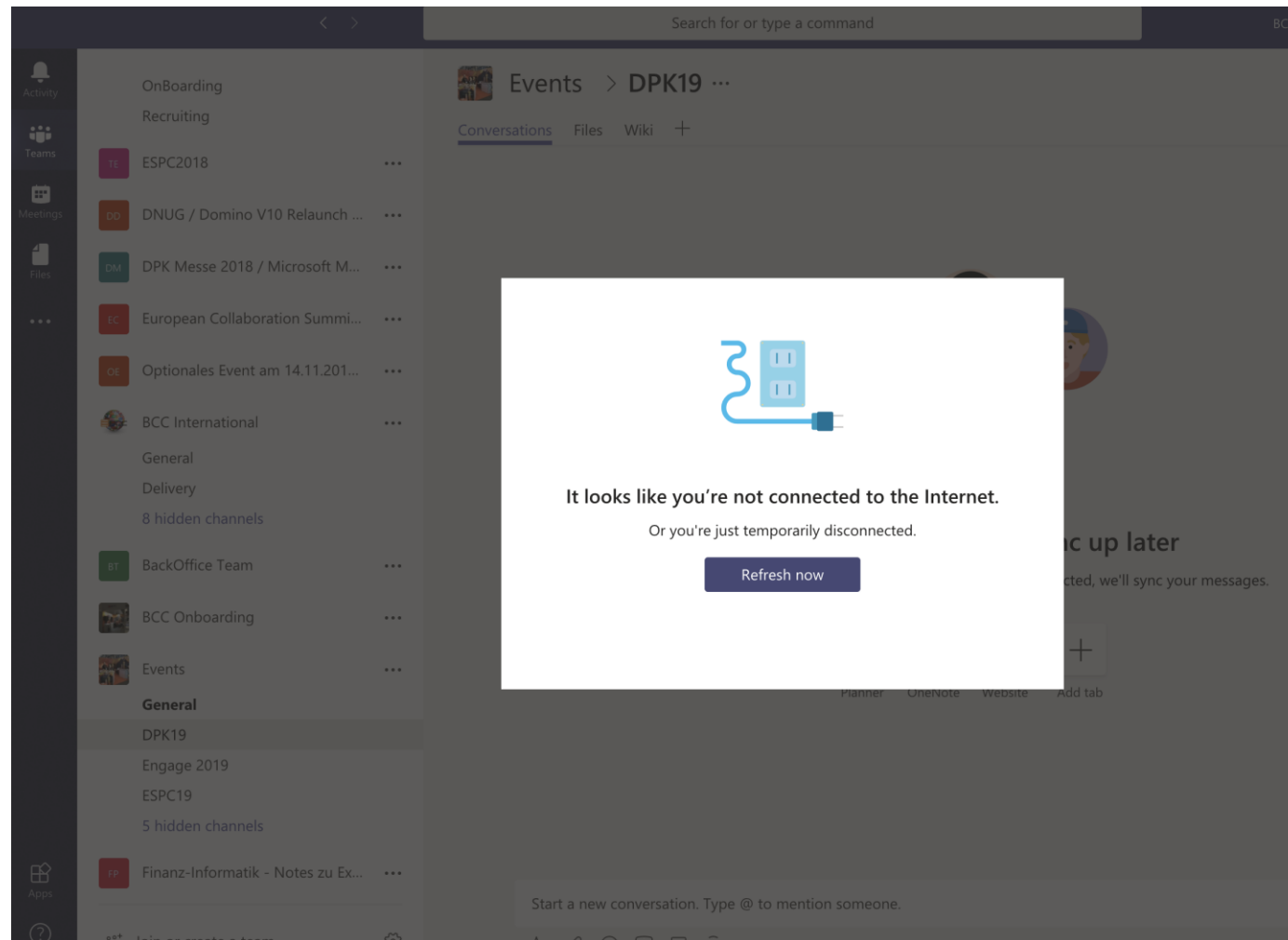


What customers like about Office 365



- OneDrive
- Office Apps & Document collaboration !
 - Apps for any device
 - Browser client with a strong feature set
- Teams
- Skype for Business – Audio & Video !!!
- Video Streams

Obviously there is room for improvement





engage

**Don't sacrifice
the battle to
win the war**

 BCC

#engageug

IBM Client Application Access - ISW Contacts

ISW DEVELOPMENT

ISW Contacts

Person Organisation Correspondence Activity Other Move To Folder... Help Refresh Selected Docs

People

- All People
- By Relationship
- By Industry
- By Interest
- By Function
- By Organisation
- By Org/Job Title
- By Org/Acc Ex/Rel Man
- By Acc Ex/Rel Type/Org
- By Acc Ex/Intrst/By Org
- By Acc Ex/Acc Ty/Org
- By Rel Man/Relationship
- By Business Unit
- By Postcode
- By State
- Organisation
- Correspondence
- Activities
- My Contacts

Last Name	First Name	Company	Phone	Email	Address	Suburb	State
Brown	Adam	ISW Development Pty Ltd	Office Phone: (03) 6216 0166 Office Fax: (03) 6216 0115 Mobile Phone: 0419 117 813 Home Phone: (03) 6247 9754	abrown@isw.net.au	GPO BOX 1059	HOBART	TAS

Adam Brown
10/10/2018
Working Locally

Found 'brown'.

Office 365 ISW Contacts Lester Collins

Search Contacts

Filters

- Terry Able Golden Stave Shepherd Centre (General Manager)
- Jo Bloggs Dept of Inf
- Karen Di Benedetto The Tasmanian Public Trustee
- Margaret Handel South Australian Cochlear Implant Centre (Principal)
- Wayne Jenkins Advanced Technologies Inc (Service Manager)
- Wendy Jones Consolidated Aerospace (CIO)
- Michael Kasteel ISW
- Harry Kewell The Neurosensory Unit (Practice Manager)
- Ray Langmaid Digital Ink (Managing Director)
0418 305 390
- Fernando Marks Delta Group (CEO)
- James McIntyre Brisbane Steel (Technical Manager)
- Peter McLeod ISW (Account Executive)
0418 125 773
- John Smith Department of Infrastructure (IT Manager)
0402 000 000
- John Smith East West Systems
- Elena Swartz East West Systems (CTO)
- Nicky Tope Topes Incorporated (Owner)
- Joan White Mater Auditory Rehabilitation & Cochlear Implant Clinic (Office Manager)

Contacts

Show All

Recent

Terry Able
Golden Stave Shepherd Centre

Harry Kewell
The Neurosensory Unit

Michael Kasteel
ISW

Margaret Handel
South Australian Cochlear Implan...

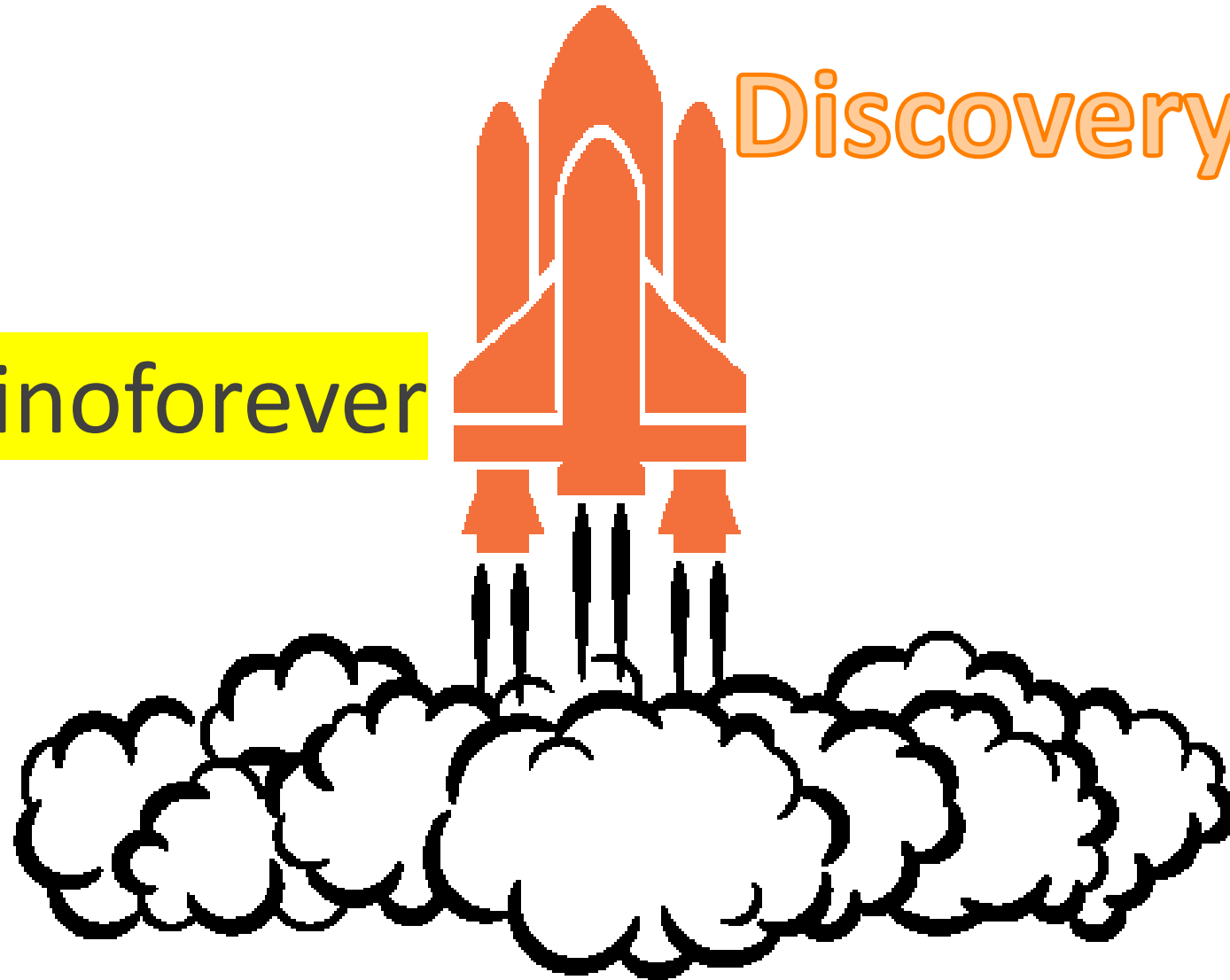


Lessons Learned : Domino Apps

- Companies have spent millions of EUR attempting to migrate Domino Apps
- Or tried to implement similar solutions on SAP and/or SQL Server
- Domino Apps still provide tremendous value due to its unique featureset
- Very cost effective – low cost / high ROI

Discovery

#Dominoforever



engage 

Cloud or On-Premise



 Office 365 





Office 2016 switches from device to user based license

- Even Office 2016 requires user account in office.com

Challenges



engage 

The Challenges

Management and
Integration



- Identity and Access Management for different systems
- IBM Domino
- IBM Connections Cloud.
- Office 365
- More systems - same teamsize

Directories

- IBM
 - Domino Directory
 - Connections Cloud Directory
- Microsoft
 - On prem Active Directory plus extensions for Exchange
 - Azure Active Directory





Azure Active Directory

- Azure AD Account necessary for Office 365
 - Created with O365 Account
 - Provided "for free"
- Free "Free" Account-max 500,000 AD objects
- Paid Azure AD Services
 - Basic: 0.85 EUR-max 10 SSO apps
 - P1: EUR 5.06 (Multi-Factor Authentication)
 - P2:7.59 EUR (IDM CAL)

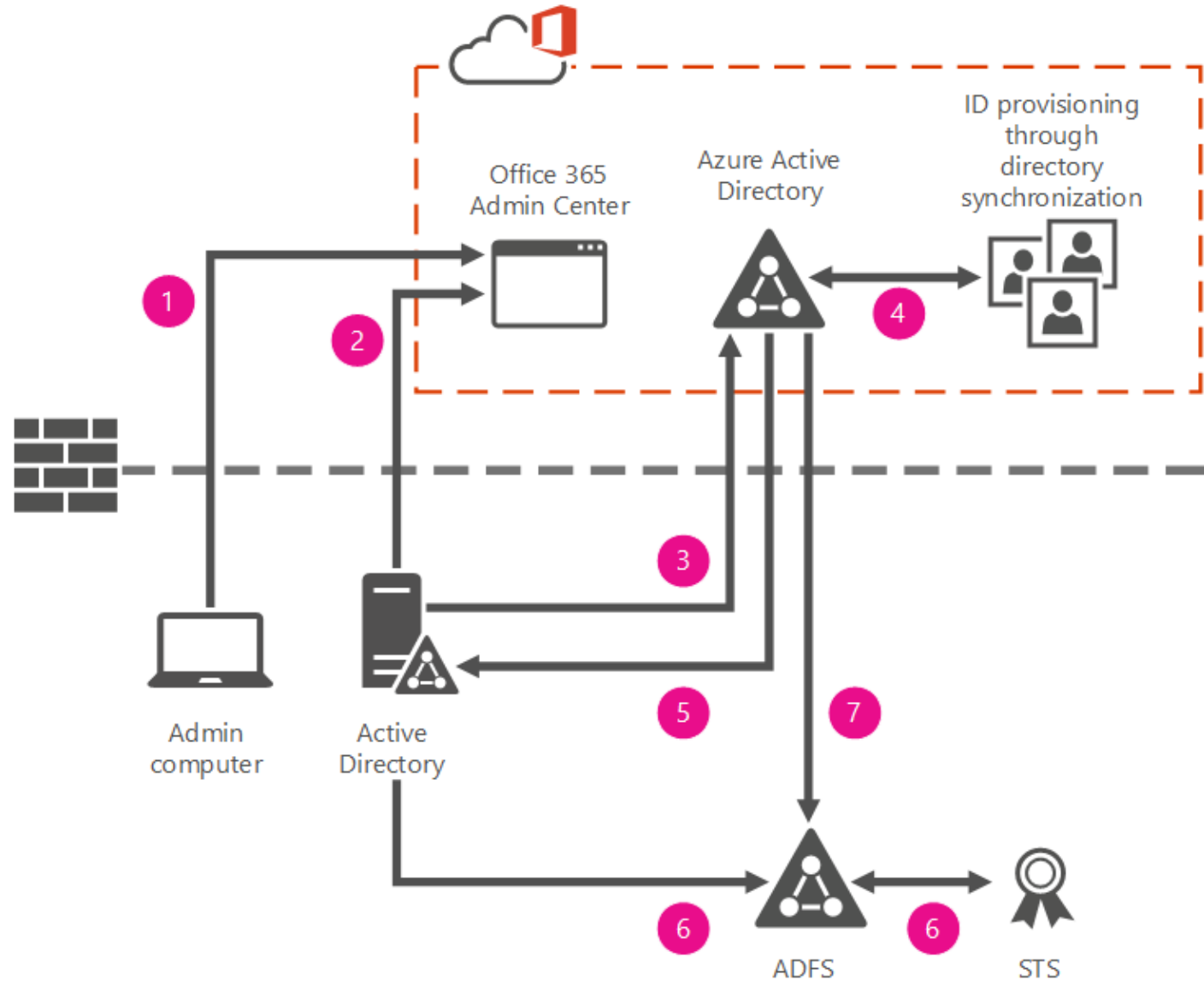
<https://azure.microsoft.com/de-de/pricing/details/active-directory/>



Office 365 / Azure AD

- Pure Cloud Identity:
 - Management only in O365
 - No on prem Server/AD
 - Solution for very complex on prem AD structures!
- Synchronized Identity:
 - Management in local AD
 - Sync with O365 (AAD Connect)
 - Password Sync as a default setting
 - No SSO – RECOMMENDED
- Federated Identity:
 - Management in local AD
 - Sync with O365 (AAD Connect)
 - Active Directory Federation Services
 - Password remains in local AD

Office 365 Federated Identity



MS Approach: AzureAD integrated Application

- IBM ICS “Portfolio”: Cisco WebEx, Zoom , Box

- Requirement:

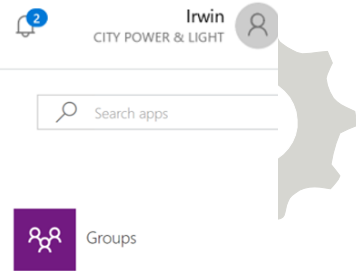
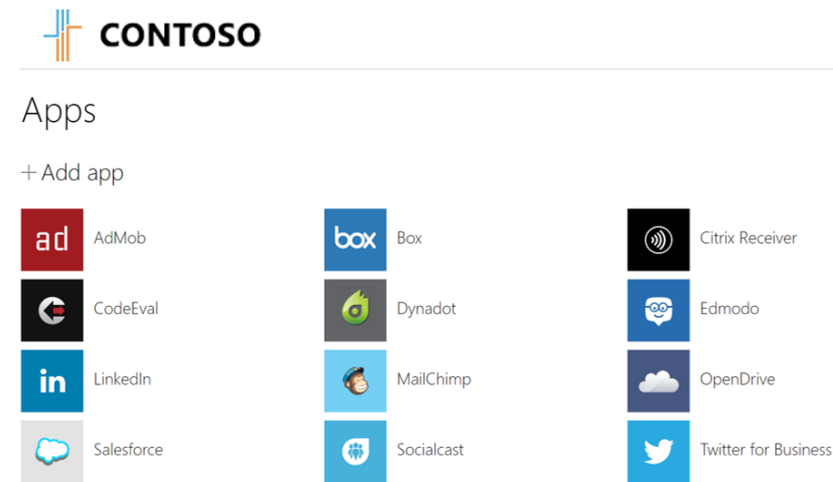
- Azure AD Subscription
- Cisco WebEx Subscription

- Deployment & SSO

- Azure AD Access Portal
- Office365 App Launcher

- Quellen:

- <https://docs.microsoft.com/en-us/azure/active-directory/active-directory-saas-box-tutorial>
- <https://docs.microsoft.com/en-us/azure/active-directory/active-directory-saas-zoom-tutorial>
- <https://docs.microsoft.com/en-us/azure/active-directory/active-directory-saas-cisco-webex-tutorial>





Challenge: Management of Subscriptions



- User Account + Subscription = available Service for User Account :-)
- IBM Connections Cloud
 - Social, S2, S1 or single subscription
- Office 365
 - F1, ProPlus, E1, E3, E5
 - More license package due to upselling -> Dynamics, Azure
- Management of Subscriptions is a new challenge for most identity management systems!

Solution – System Management

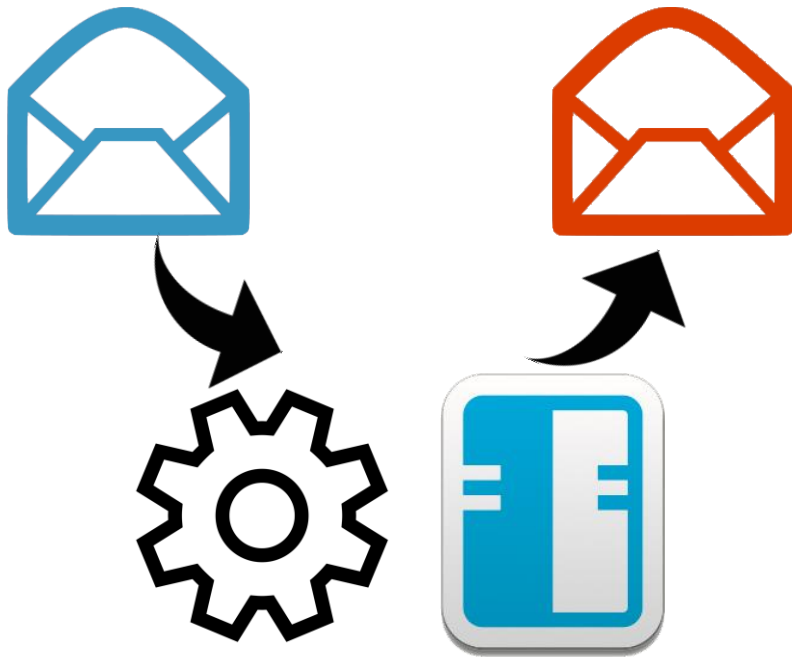
- Automate!
- Implement Standards!
- Simplify Domino infrastructure
- Update to latest version

- Comply to internal security standards
 - Key Rollover
 - Upgrade to AES encryption



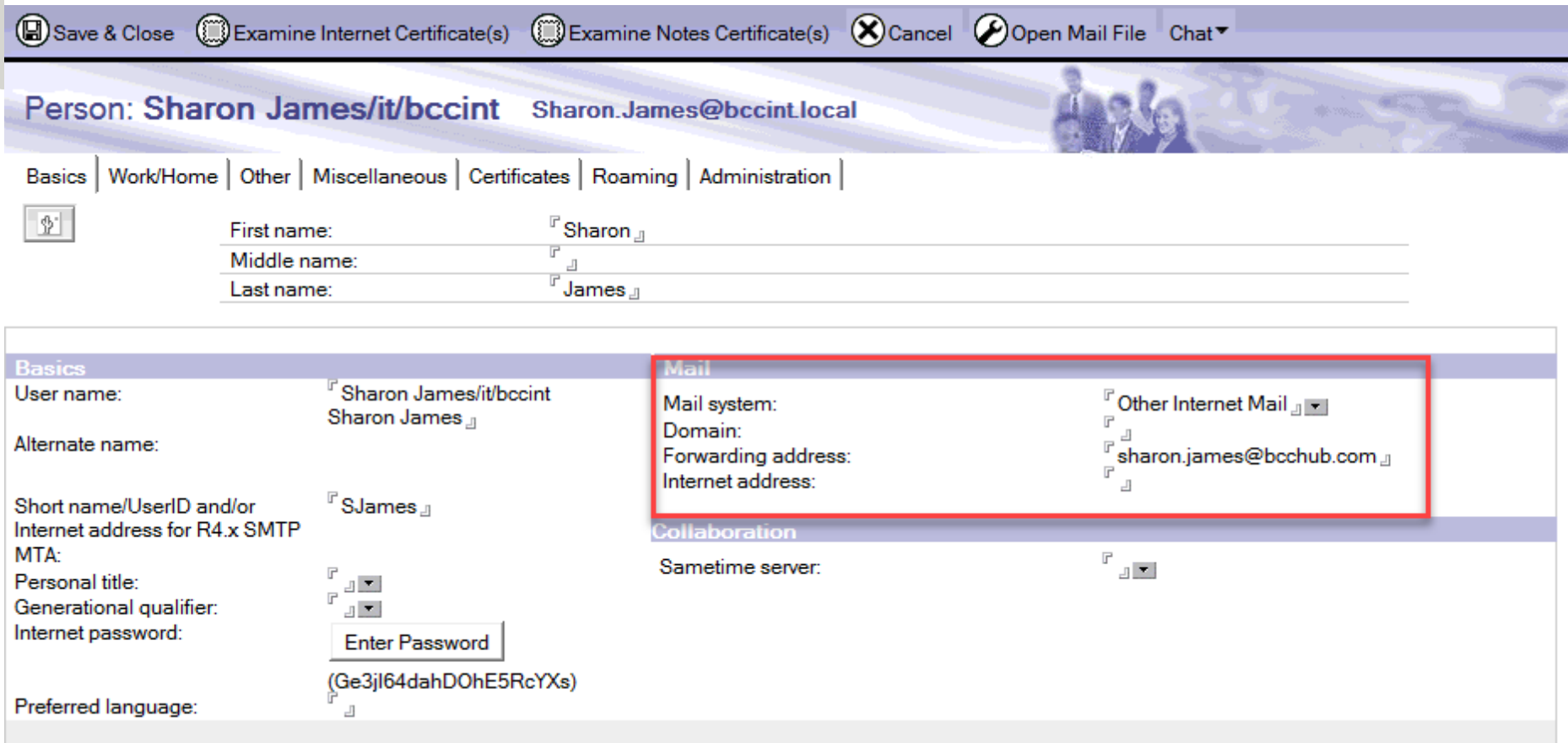
The Challenges

Mail Co-Existence



- Apps are sending Mail to users
 - Ensure mail forwarding
 - Ensure mail format (stored forms, buttons etc.)
 - Sending encrypted mails
- Receiving Mails in Domino Apps
 - Mail in DB
 - Mail triggered Workflows

Mail Co-Existence – Domino person document



Save & Close Examine Internet Certificate(s) Examine Notes Certificate(s) Cancel Open Mail File Chat

Person: Sharon James/it/bccint Sharon.James@bccint.local

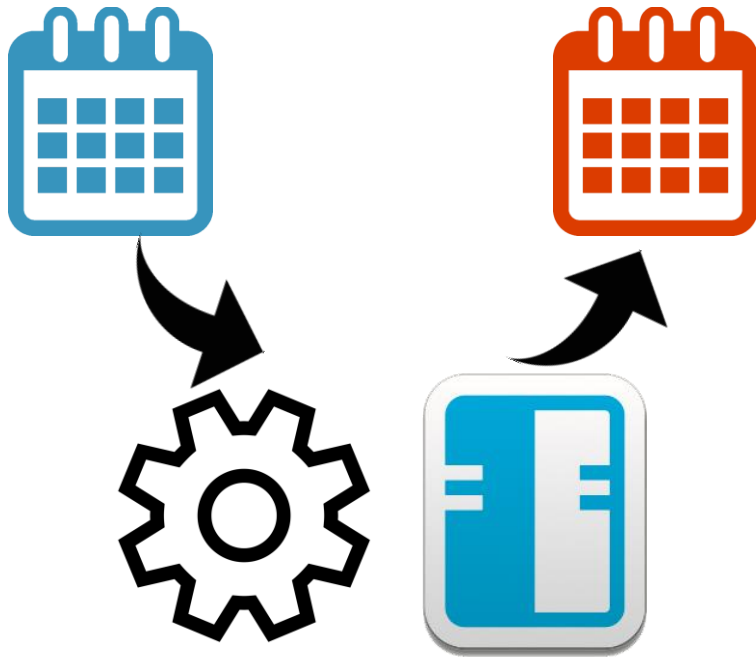
Basics | Work/Home | Other | Miscellaneous | Certificates | Roaming | Administration

First name: Sharon
Middle name:
Last name: James

Basics	Mail
User name: Sharon James/it/bccint Sharon James	Mail system: Other Internet Mail
Alternate name:	Domain: sharon.james@bcchub.com
Short name/UserID and/or Internet address for R4.x SMTP: SJames	Forwarding address:
MTA:	Internet address:
Personal title:	Collaboration
Generational qualifier:	Sametime server:
Internet password: Enter Password	
Preferred language: (Ge3jl64dahDOhE5RcYXs)	

The Challenges

Calendar Co-Existence



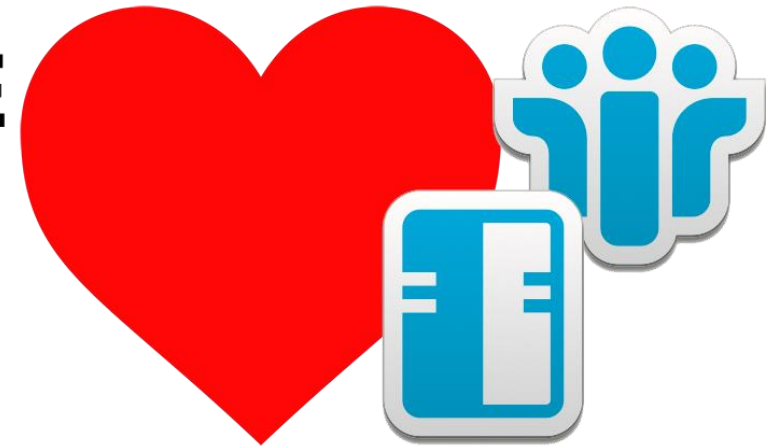
- Standard Invite works
- Update usually work
- Busy time search issues



Lessons learned: Domino Apps will remain

- Web based Apps versus Notes Client
- Client Plug In
- Many BP solutions for application modernization
- Native iPad Client is here
- (Android is coming)
- TeamWorkR enablement is an interesting option

WE



engage 

The Challenges

Right Size Licensing



- How are you licensed?
- Are you covered?
- Over licensed?
- Domino Utility Server



Directory Services – Azure AD

Integration is key

SQL Database Integration / Power BI

- HCL has addressed this challenge in the general session !
 - So please deliver !

engage

The Challenges

& More challenges



- There will be more challenges
- This community will share
- Improve the product with feedback about integration to HCL

Questions?



engage

Contact us



Contact@bcc.biz



+44 20 3290 9224



www.bcchub.com



BCCAdminTools



#engageug

Visit us at our booth



BCC

www.bcchub.com

contact@bcc.biz